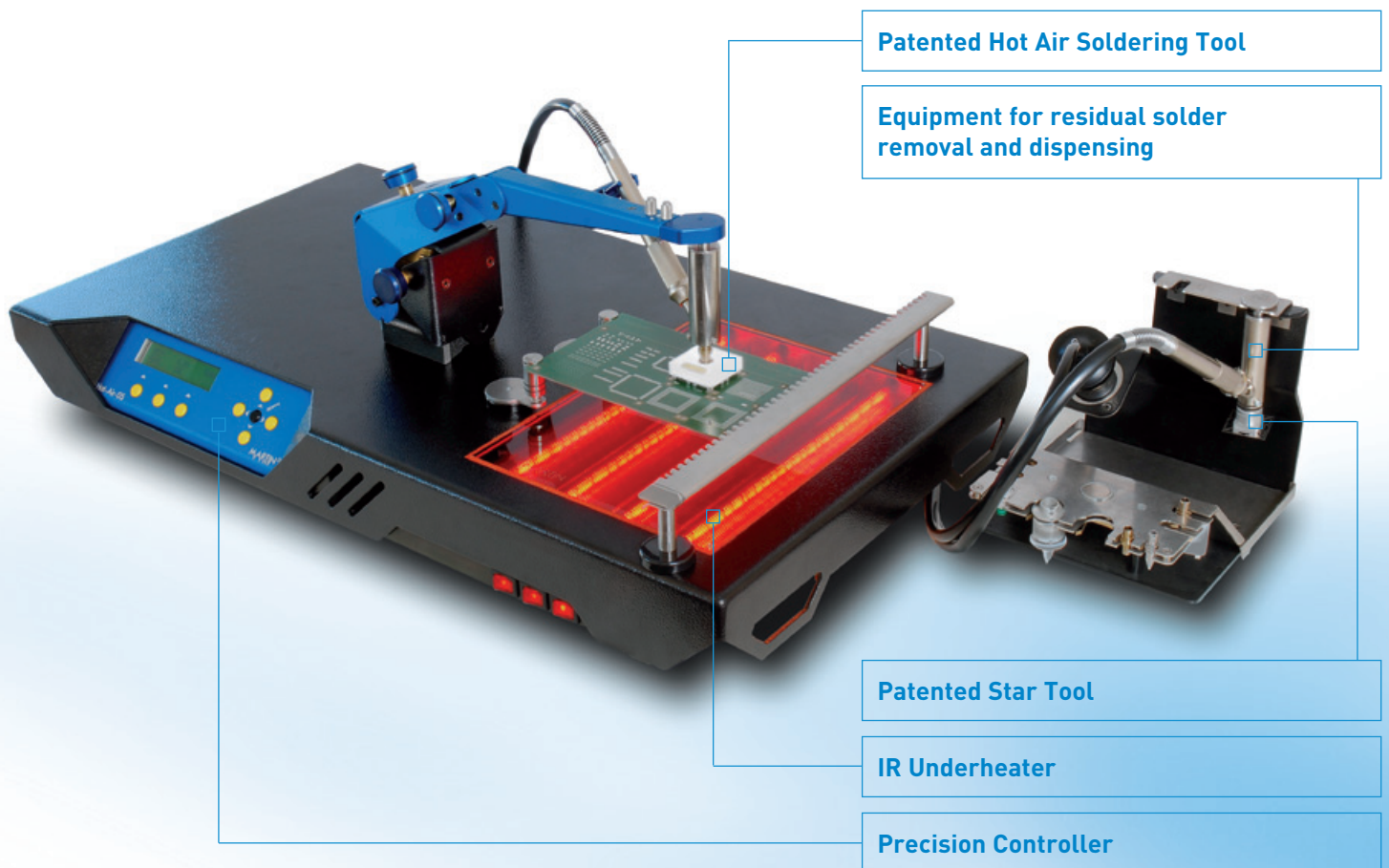


EXPERT 04.6 Product Family

Manual Rework

The Next Level of Rework

For soldering, placement, residual solder removal or dispensing, the EXPERT 04.6 rework stations fulfill the requirements of professional SMD repair. User friendly, reliable systems at an attractive price – ideal for those who are ready to move up from hand soldering.



Affordable

The EXPERT 04.6 systems reflect MARTIN's many years of rework experience. The result is a product family that offers optimum configurations for a wide range of applications, at a very competitive price.

Useful

The different configurations allow the ability to rework many PCB sizes and types of SMDs. The greatest range is offered by the EXPERT 04.6 IXH – with a powerful underheater that is well suited for both industrial and consumer electronics.

SHP – Exact Placement

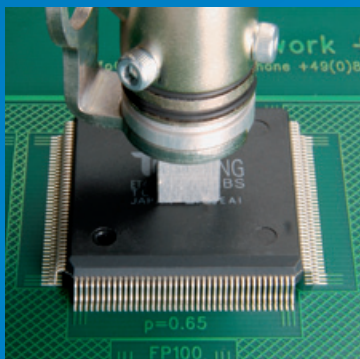
The EXPERT 04.6 workstations are based on a placement philosophy patented by MARTIN: At the heart is the Single Head Placer (SHP) Positioning Arm. Four backlash-free positioning axes for the Solder and Placement Pen are easily and accurately adjusted by hand. With the Martin Star Tools, alignment of the Soldering Tool is extremely simple. The EXPERT 04.6 is a fully-equipped, compact set up that is perfect for initial rework system users.

Rapid

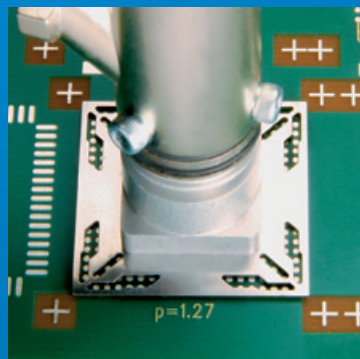
Within seconds the Star Tool is aligned with the pads on the PCB. The SHP Positioning Arm mechanically stores the placement location and accurately deposits the component. Placement is that simple!

On Target

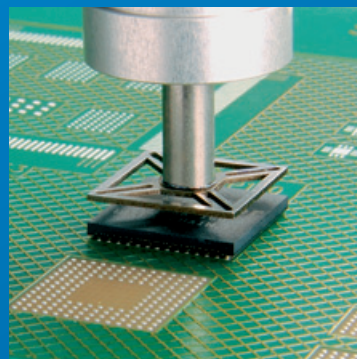
A large selection of on-the-shelf, available tools make the SHP, together with the Star Tool, a multi-functional tool. Can be used for less common SMD types too.



QFP/SO



BGA



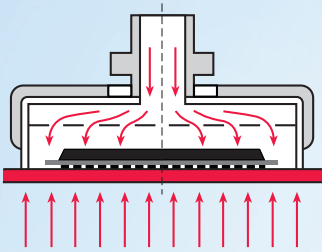
CSP/QFN

Effective Soldering

In rework, Hot Air Technology is indispensable. The EXPERT 04.6 combines precisely controllable Hot Air and consistent IR Heating Technology in one rework station. With the supplied soldering software, profiles can be easily created and re-used again, saving time and ensuring consistency.

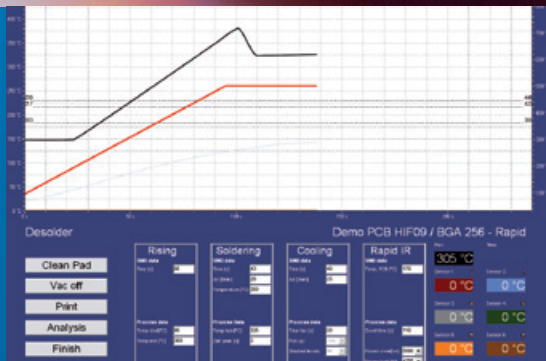
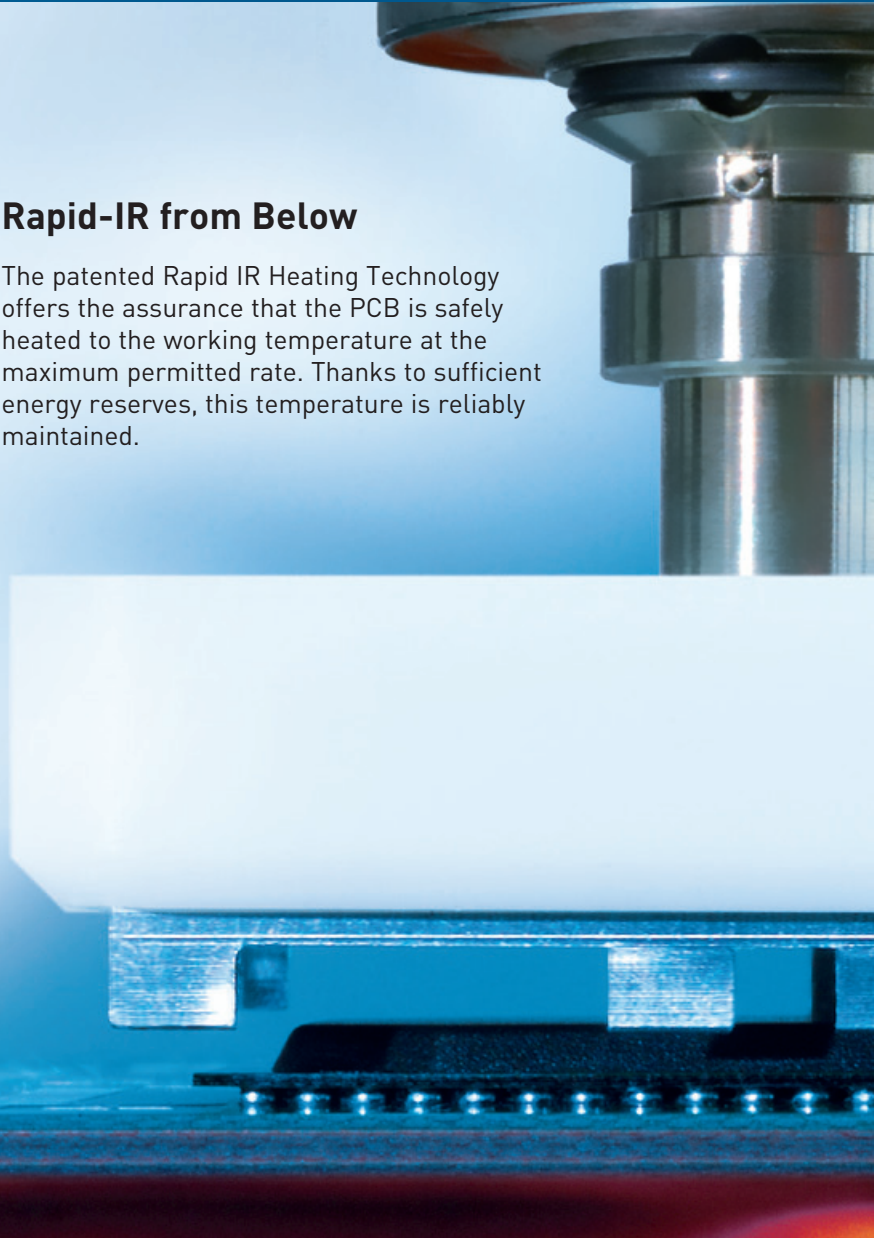
Hot Air from Above

MARTIN's Precision Hot Air Technology heats up the components within the recommended limits set by manufacturers. There is a maximum temperature tolerance achieved of $\pm 1\%$.



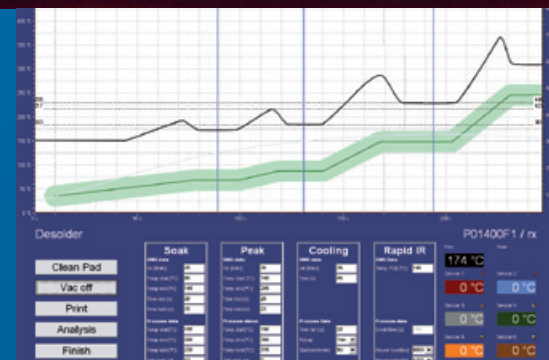
Rapid-IR from Below

The patented Rapid IR Heating Technology offers the assurance that the PCB is safely heated to the working temperature at the maximum permitted rate. Thanks to sufficient energy reserves, this temperature is reliably maintained.



Rapid Profile

Based on Rapid Technology, this innovative profile guarantees clear and effective processes. There are time savings of up to 30%.



Graph Profile

This mode of operation duplicates soldering profiles used in mass production. Users simply transfer the thermal values from data sheets into the Easy Solder program.

EXPERT 04.6 Product Family

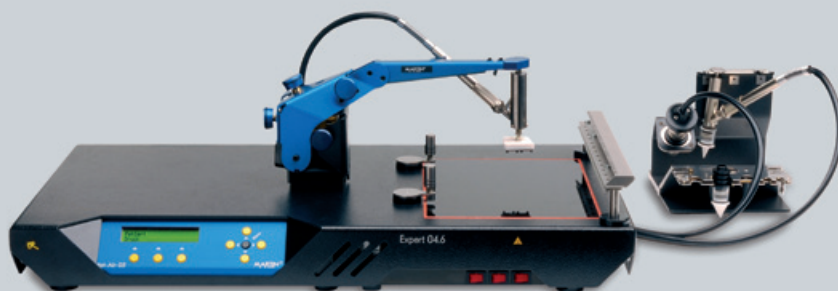
The EXPERT 04.6 systems with Hot Air and IR Technology are complete rework stations for manual soldering of SMDs, residual solder removal and dispensing. Soldering profiles can be easily established and supported with the supplied software packet Easy Solder eco. The different machine configurations are specific to suit various applications.

EXPERT 04.6 IXH

Hot Air rework station with large area IR Underheater, especially developed for reworking medium sized PCBs.

Technical Details

Underheater (IR):	300 W - 2400 W
Top Heating (Hot Air):	300 W
PCB Size (max):	500 mm x 300 mm
Heated Area:	245 mm x 185 mm
Foot Print:	660 mm x 360 mm

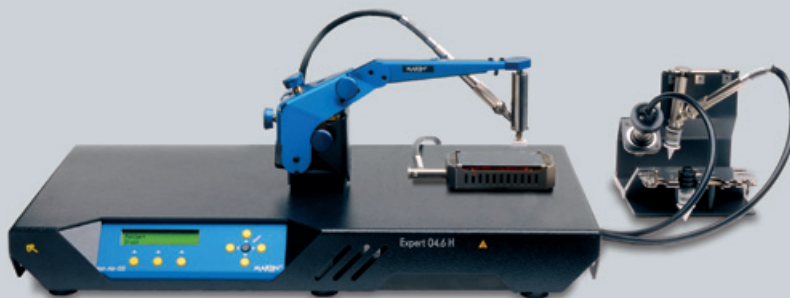


EXPERT 04.6 IH

Hot Air rework station with localized IR Underheater, specifically configured for reworking smaller PCBs.

Technical Details

Underheater (IR):	110 W
Top Heating (Hot Air):	300 W
PCB Size (max):	110 mm x 80 mm
Heated Area:	80 mm x 60 mm
Foot Print:	600 mm x 360 mm



EXPERT 04.6 NN

Hot Air rework station that can be combined with IR underheater. With additional modules, this machine can also be used for residual solder removal and dispensing.

Technical Details

Underheater:	non
Top Heating (Hot Air):	300 W
PCB Size (max):	not specified
Heated Area:	not specified
Foot Print:	not specified

